

AUSTRALIAN STYLE
at home in Tuscany

Boelee

ALL THE *hot looks* FROM

MILANO!

COLOUR DRENCHING IN RED

VINCENT
VAN DUYSSEN
DESIGN DICTUM

A SYDNEY LANDMARK HOUSE REIMAGINED

SALONE DEL MOBILE 2024: THE PEOPLE + THE PRECINCTS + THE TRENDS!

mission d

Old Hollywood glamour meets Mediterranean flair in this sprawling Spanish mission-style mansion.

Words ALEXANDRA ENGLISH Photography MAREE HOMER Styling MARIA PAPANTONIOU

These pages This Spanish mission-style mansion was built in the 1930s for a family of graziers. The present owners, Stephanie Conley Buhre and her family, maintained many of the original Mediterranean-esque features while overhauling it with a contemporary internal renovation.



This page The pool area with custom tiles by the Spanish artisan who created the splashback in the main kitchen. Restoration Hardware outdoor sunloungers and Janus et Cie umbrellas.

Opposite page, from top The powder room in the billiards room. Thibaut 'Sunset Boulevard' wallpaper from Boyac and 'Montego' mirror from Wisteria Design. Vase from Orient House on Calacatta 'Picasso' marble sink from Granite & Marble Works. In the outdoor entertaining area, the furniture is from Janus et Cie with cushions from Ascraft and throws from Analu. Tableware from Themis Z. Terracotta tiles from Perini Tiles.

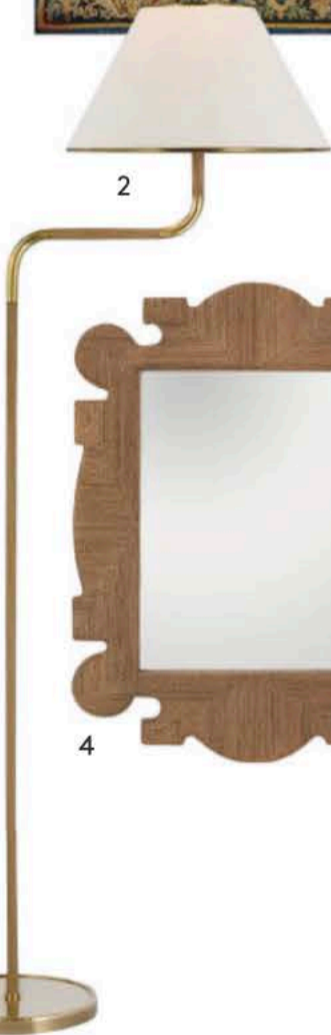
5

SIGNATURE STYLE
KEY PIECES

1



2



3

4



5



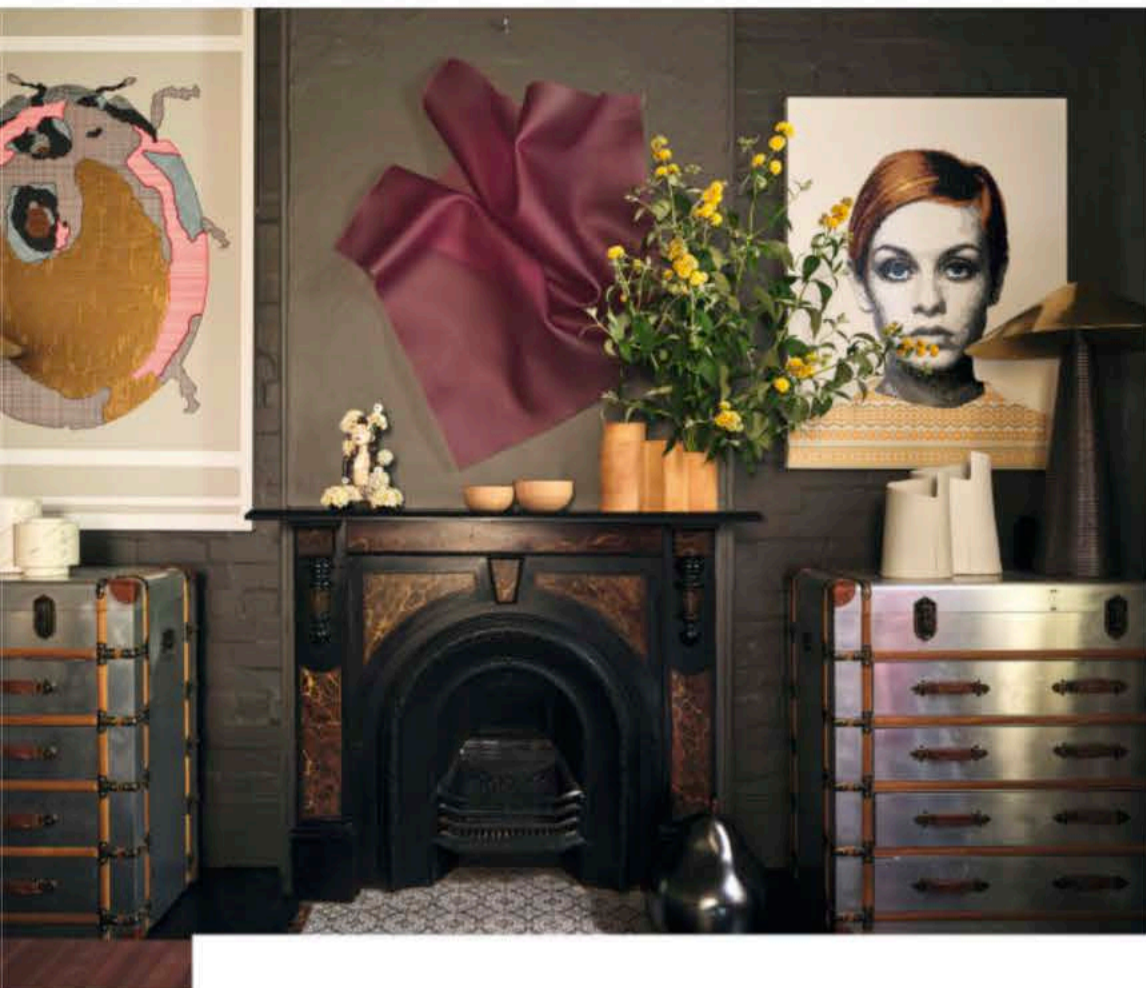
1 Aubusson verdure **tapestry** in wool and silk, \$18,000, from The Vault Sydney. 2 'Rigby' bridge arm **floor lamp** in polished nickel and ebony with linen shade, \$2690, from The Montauk Lighting Co. 3 Perrin & Rowe 'Ionian' bench-mounted **mixer** in Gold, \$1715, from The English Tapware Company. 4 Arteriors 'Mowgli' **mirror**, \$5725, from Boyd Blue. 5 Lorenza Bozzoli Design 'Sparkle' green **pouf** with gold fringe, \$2695, from 1stDibs.

Fan base

SMAC STUDIO PRINCIPAL SHONA MCELROY WEARS DION LEE DRESS IN HER PADDINGTON STUDIO. 'BILLY' RUG IN PINK FROM HER ART DECO-INSPIRED ICONS COLLECTION WITH HALI. VINTAGE BROWN VELVET CHAIR AND FANS FROM FACEBOOK MARKETPLACE. ALL OTHER FURNITURE CUSTOM DESIGNED BY FFORM. DREAMSCAPE #28 PAINTING BY AMELIA AXTON FROM SIBU GALLERY. 'PROMETHEUS VII' LIGHT BY CHRISTOPHER BOOTS FROM EST LIGHTING. POMEGRANATE SCULPTURES FROM JANUS ET CIE. WALLS IN BAUWERK 'JINDABYNE'.

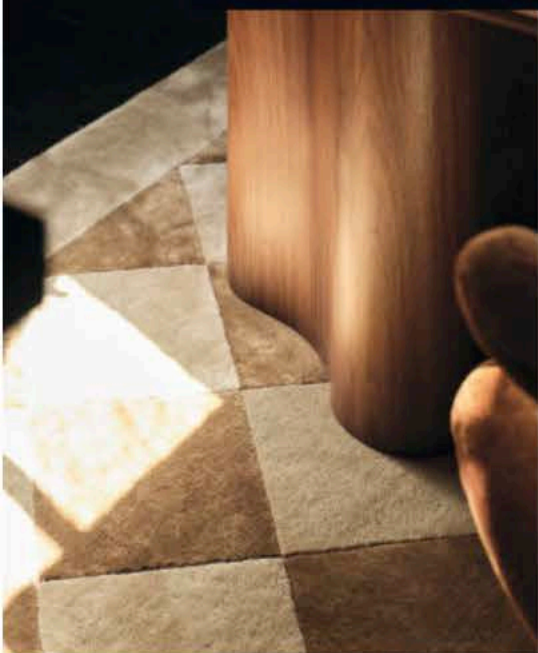
Photography DAVE WHEELER

Shona McElroy's Smac Studio has been clocking up wins and accolades from a host of global admirers.



DO YOU WORK FROM HOME? Luckily we're at the stage where we can have this gorgeous studio on a corner in Sydney's Paddington, where I have lived for the past five years. Part of what drew me here was the corner art galleries I had such connection to and that often spilled out onto the street. It's quite serendipitous that we ended up here. HOW WOULD YOU DESCRIBE YOUR WORKSPACE? Downstairs looks and operates more like an intimate bar, with a small plush lounge area and a striking dining area. The palette is also non-traditional, swathed in a dark green-grey with pops of pinks, oranges and burgundies. We wanted the space to feel like a true representation of our style, which can lean traditional but with elements of surprise, we also have a heavy focus on smart storage and design. We have a huge piece of joinery that conceals our kitchenette, air conditioner, samples and bathroom that we've designed mirrors into to make the 25-square-metre space feel larger and brighter. WHAT APPEALED TO YOU ABOUT THE SPACE? The double-storey layout, as well as the large windows engaging with the streets beyond. Its sage-green facade and the double-door entrance feel very nostalgic and true to the Paddington context. The alterations saw a new bathroom where no plumbing existed (the toilet had a handbasin built into the cistern – horror!), a new

This page, clockwise from top left In the upstairs workspace artworks, from left, *Beetle* by Trevor Cross, on mantelpiece *Saoirse Wayfarer* sculpture by Clairy Laurence, *Petale #7* by Jean Paul Mangin and *Twiggy* by Trevor Cross, all from Studio Gallery. *Eden* pear sculpture on floor from Janus et Cie. All vessels from Ondene. Kelly Wearstler table lamps from Bloomingdales Lighting. Fform furniture in the downstairs meeting room. 'Precision Pharmacy' floor lamp by Kelly Wearstler from Bloomingdales Lighting. 'Hermes' marble sink from Marble Hub, tapware from Astra Walker and Fform custom mirror in the powder room. In the upstairs workspace. 'Draper' rug in Beige designed by Smac Studio for Hali. Custom desk from Fform.



kitchenette encased in our joinery, staining the floors, adding new window treatments, and paintwork to the entire inside. We then layered it with custom furniture from Fform, rugs from our Hali collaboration, art from Amelia Axton, considered lighting including DIY fan wall lights made by me and a beautiful Christopher Boots pendant light to top it off. WHAT ARE YOUR WORKSPACE ESSENTIALS? This is the most boujee thing I do in life (justified for the business, of course) but we get fresh flowers delivered every second week. It honestly changes the space. We also have scented candles on rotation downstairs, and our Sonos sound system constantly going. WHAT IS UNIQUE ABOUT YOUR SPACE? It's non-traditional and inviting, which definitely describes us as people. Its functionality pushes the boundaries of the space – which is also what we're good at. Fitting a kitchen, storage, bathroom, meeting room and lounge room into 25sqm was no easy feat. And finally it stylistically is us, it doesn't have a prescribed 'style', it's more of a conglomeration of things that we liked and it's come together beautifully. COULD YOU DESCRIBE THE VIEW? Leafy. Upstairs the view is through the treetops, and downstairs you're looking onto the footpath and the planting, and the street beyond. COULD YOU DESCRIBE A TYPICAL WORKDAY? We get in around 8:30, fill up with tea and discuss the day ahead (and the night before). Every day is a little different in what we're up to. We could be on site overlooking builds, which is always fun. We might be hosting a VR presentation for clients in the office, or could just be at our desks powering through work. WHAT PROJECTS ARE YOU LOOKING FORWARD TO IN THE COMING YEAR? We've been blessed with some amazing large-scale residential projects with fun and trusting clients. We've got a beautiful one in Greece, a few in Sydney's Eastern Suburbs, and one in North Sydney overlooking the Harbour. I've just purchased my own apartment in Edgecliff that's getting a reno. I'm currently deciding whether to go really colourful or very muted. smacstudio.com.au